



Windows

Title: Cambridge First Certificate in English

Author: Cambridge Examination Publishing with Alan Battersby

Publisher: Cambridge University Press

Type: FCE Examination practice and past papers

### System requirements

FCE Examination Practice:  
Windows 95/98 Needs 133MHz Pentium, 16MB Ram, 500k free space on disk, 640x 480 display or better.

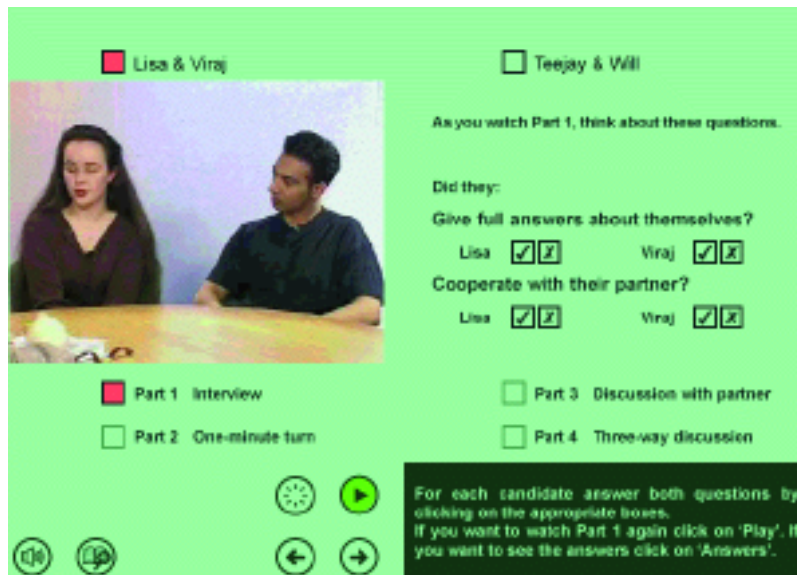
Price: Single user version: £29.95

EU & UK add 17.5% VAT

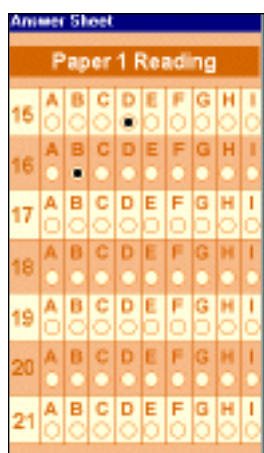
## CAMBRIDGE EXAMINATIONS PUBLISHING

# First CERTIFICATE IN ENGLISH

CUP being at the heart of First Certificate territory it was well placed to gain the rights to use the real past papers for FCE practice. The four papers used here give over 20 hours of listening practice including audio explanations and tips. One striking approach to Paper 5 (Speaking) was to include video snips of near-authentic interviews as a model for appraisal and criticism.

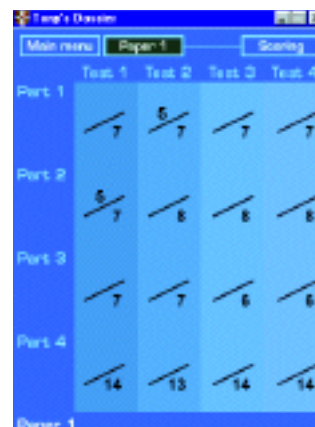


Another unusual approach but one taking the tasks nearer to the real thing is the use of a tick-box answer sheet (on-screen). This is not a particularly friendly form of student input on a computer but it serves to familiarise the examinee in advance with the forms of the exam.



Each exam task included here has its own introduction so that the student knows exactly what will be seen in the exam. Feedback is given on the **Reading, Use of English and Listening** tasks so that students can check their work.

The program was written in Macromedia's Authorware although it is not available for the Macintosh. This needs Quicktime – it can be installed



from the CD-ROM.

The Autorun feature works very well. It prompts students to enter their names and passwords. Navigation through the many elements in the package is simple and intuitive.

The tone of the package is on the formal side, again appropriate to the exam ethos. Animated figures popping up to give humorous pieces of advice would be out of place here.

The glossary which can be located from the main menu gives you useful information about the way the real exam is conducted, the criteria used by the examiners, such as grammar: how accurate you are, discourse management: how you organise what you say, pronunciation: how clearly you speak, communication: how you interact with fellow students and the examiner, and more.